



ORGOREVIEW

Question Vault

Welcome to orgoreview question vault. We have 5000 more problems for you to solve.

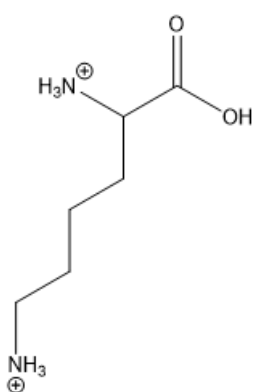
Share

Six different protonation states of the amino acid lysine are shown below.

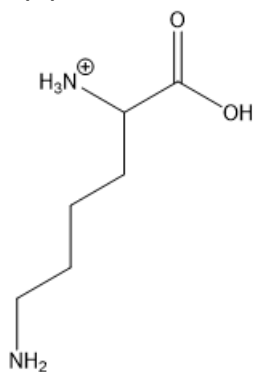
The pK_a of the carboxylic acid group is 2.2. The pK_a of the protonated α -amine is 9.0. The pK_a of the protonated side chain amine is 10.5.

Choose the structure that represents the main form of lysine found in your blood, which is buffered at a pH of 7.4.

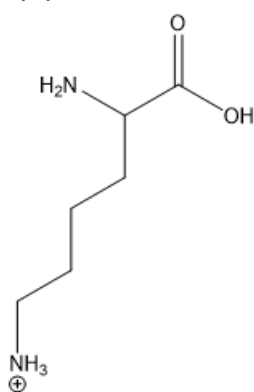
(A)



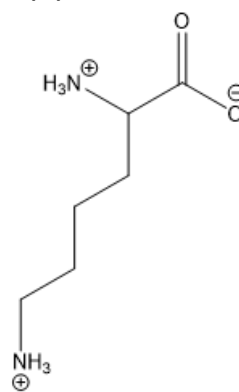
(B)



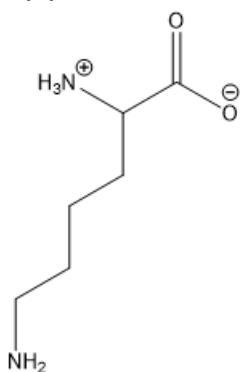
(C)



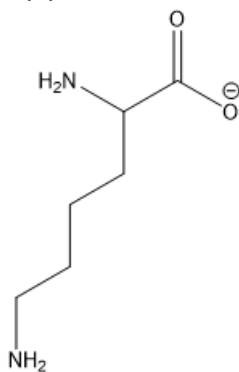
(D)

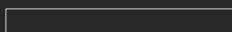


(E)



(F)





How to Reach Us

Todd's Test Prep
2255 Glades Road
Suite 324A
Boca Raton, Florida 33431
E-mail: help@orgoreview.com

Links

[Contact](#)
[Terms](#)
[Privacy Policy](#)

follow us

