



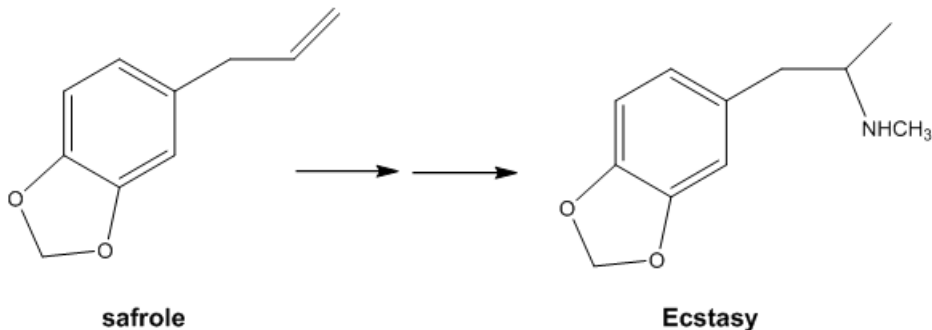
# ORGOREVIEW

## Question Vault

Welcome to orgoreview question vault. We have 5000 more problems for you to solve.

Share

Recent news reports have indicated that persons unknown have attempted to secure large quantities of safrole, the principal component of oil of sassafras, responsible for the flavor of traditional root beer. Safrole is a restricted compound because of its structural relationship to the drug of abuse called "Ecstasy," 3, 4-methylenedioxymethamphetamine.



Show how an unscrupulous person might chemically convert safrole to "Ecstasy." (But do not attempt to do this at home.)

### How to Reach Us

Todd's Test Prep  
2255 Glades Road  
Suite 324A

Boca Raton, Florida 33431  
E-mail: [help@orgoreview.com](mailto:help@orgoreview.com)

**Links**

[Contact](#)

[Terms](#)

[Privacy Policy](#)

**follow us**



Copyright 2025. All Rights Reserved.