



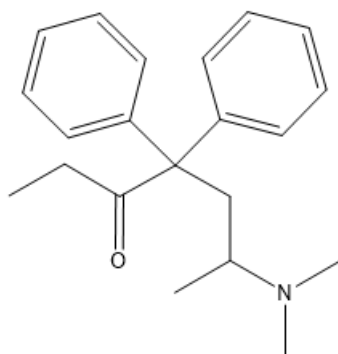
ORGOREVIEW

Question Vault

Welcome to orgoreview question vault. We have 5000 more problems for you to solve.

Share

Select the **correct** molecular formula for Methadone, a synthetic opioid drug prescribed to alleviate severe pain and to assist in the treatment of drug addiction.



Methadone

- (A) $C_{22}H_{27}NO$ (B) $C_{21}H_{28}NO$ (C) $C_{21}H_{27}NO$ (D) $C_{21}H_{27}NO_2$ (E) $C_{21}H_{25}NO$

How to Reach Us

Todd's Test Prep
2255 Glades Road
Suite 324A

Boca Raton, Florida 33431

E-mail: help@orgoreview.com

Links

[Contact](#)

[Terms](#)

[Privacy Policy](#)

follow us



Copyright 2026. All Rights Reserved.