



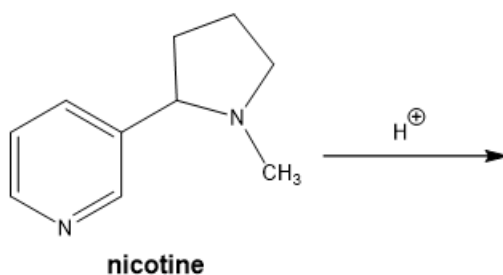
# ORGOREVIEW

## Question Vault

Welcome to orgoreview question vault. We have 5000 more problems for you to solve.

Share

Nicotine is a biologically active alkaloid found in tobacco. The pKa values for the two nitrogen atoms are 8.0 and 3.12. Give the structure of the predominant species of nicotine present at pH = 5.0.



## VIDEO SOLUTION



### How to Reach Us

Todd's Test Prep  
2255 Glades Road  
Suite 324A  
Boca Raton, Florida 33431  
E-mail: [help@orgoreview.com](mailto:help@orgoreview.com)

**Links**

[Contact](#)

[Terms](#)

[Privacy Policy](#)

**follow us**



Copyright 2025. All Rights Reserved.