



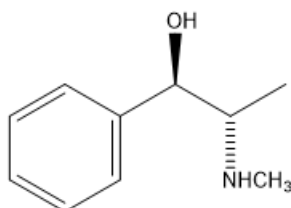
ORGOREVIEW

Question Vault

Welcome to orgoreview question vault. We have 5000 more problems for you to solve.

Share

Choose the *incorrect* statement about ephedrine and its enantiomer.



- (A) The molecular weights of both enantiomers are the same.
- (B) The melting points of both enantiomers are the same.
- (C) Both enantiomers rotate the plane of polarized light the same number of degrees but in opposite directions.
- (D) The color of the two enantiomers must be the same. (E) The toxicity of the two enantiomers must be equal.

VIDEO SOLUTION



How to Reach Us

Todd's Test Prep

2255 Glades Road

Suite 324A

Boca Raton, Florida 33431

E-mail: help@orgoreview.com

Links

[Contact](#)

[Terms](#)

[Privacy Policy](#)

follow us



Copyright 2026. All Rights Reserved.