



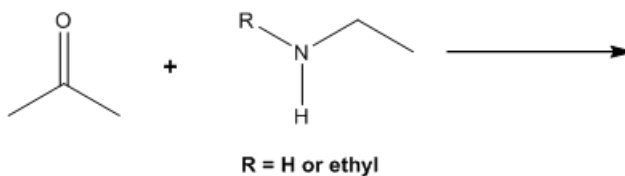
ORGOREVIEW

Question Vault

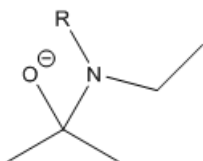
Welcome to orgoreview question vault. We have 5000 more problems for you to solve.

Share

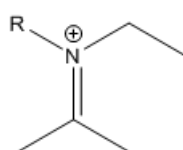
Depending on whether $R = H$ or an ethyl group, the following reaction will yield an imine or enamine. The mechanisms for each reaction are very similar and go through several intermediates. Choose the structure that represents the last common intermediate for the two reactions, which undergoes a different mechanistic step depending on whether $R = H$ or ethyl.



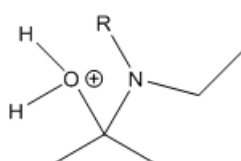
☐ (A)



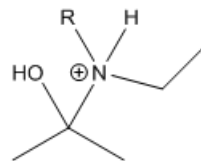
☐ (B)



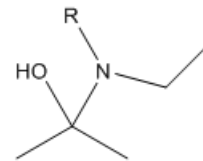
☐ (C)



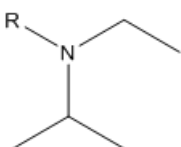
☐ (D)



☐ (E)



☐ (F)



VIDEO SOLUTION



How to Reach Us

Todd's Test Prep
2255 Glades Road
Suite 324A
Boca Raton, Florida 33431
E-mail: help@orgoreview.com

Links

[Contact](#)

[Terms](#)

[Privacy Policy](#)

follow us



Copyright 2026. All Rights Reserved.