



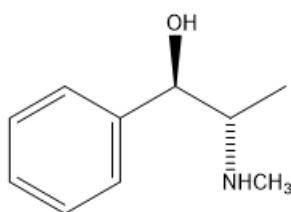
ORGOREVIEW

Question Vault

Welcome to orgoreview question vault. We have 5000 more problems for you to solve.

Share

Ephedrine is chiral compound isolated from the plant ephedra sinica and has the following molecular structure.



Choose the *incorrect* statement about ephedrine.

- ☐ (A) The mirror image structure of ephedrine is its enantiomer.
- ☐ (B) The ephedrine shown above has two diastereomers
- ☐ (C) Ephedrine and all of its diastereomers must have the same melting point.
- ☐ (D) Ephedrine and its enantiomer have the same melting point. ☐ (E) Ephedrine and enantiomer are stereoisomers.

VIDEO SOLUTION



How to Reach Us

Todd's Test Prep
2255 Glades Road
Suite 324A
Boca Raton, Florida 33431
E-mail: help@orgoreview.com

Links

[Contact](#)

[Terms](#)

[Privacy Policy](#)

follow us



Copyright 2025. All Rights Reserved.