



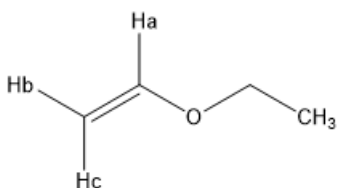
ORGOREVIEW

Question Vault

Welcome to orgoreview question vault. We have 5000 more problems for you to solve.

Share

In the following compound the coupling constant J_{ac} is larger than J_{ab} . Draw a splitting tree diagram for the ^1H NMR absorption of Ha only. Clearly show the number of peaks that would be observed for Ha.



VIDEO SOLUTION



How to Reach Us

Todd's Test Prep
2255 Glades Road
Suite 324A
Boca Raton, Florida 33431
E-mail: help@orgoreview.com

Links

[Contact](#)

[Terms](#)

[Privacy Policy](#)

follow us



Copyright 2025. All Rights Reserved.