



ORGOREVIEW

Question Vault

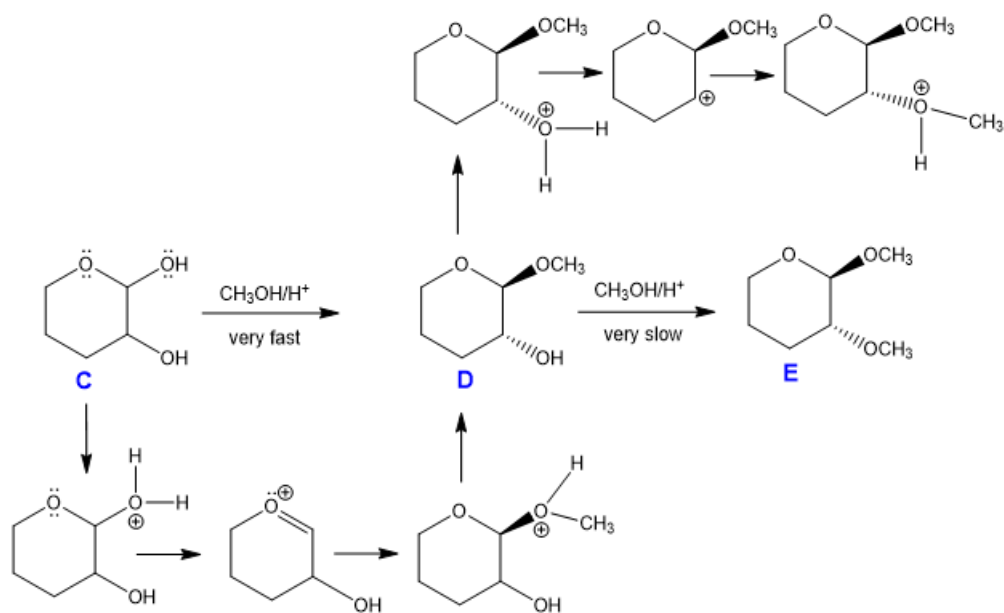
Welcome to orgoreview question vault. We have 5000 more problems for you to solve.

Share

The conversion of C to D is very fast whereas the conversion of D to E is very slow.

(a) Using the curved arrow formalism, show the bond breaking and bond making in the conversion of C to D.

(b) Give an explanation for why the conversion of D to E is slow compared to the conversion of C to D.



How to Reach Us

Todd's Test Prep
2255 Glades Road
Suite 324A
Boca Raton, Florida 33431
E-mail: help@orgoreview.com

Links

[Contact](#)

[Terms](#)

[Privacy Policy](#)

follow us



Copyright 2026. All Rights Reserved.