



ORGOREVIEW

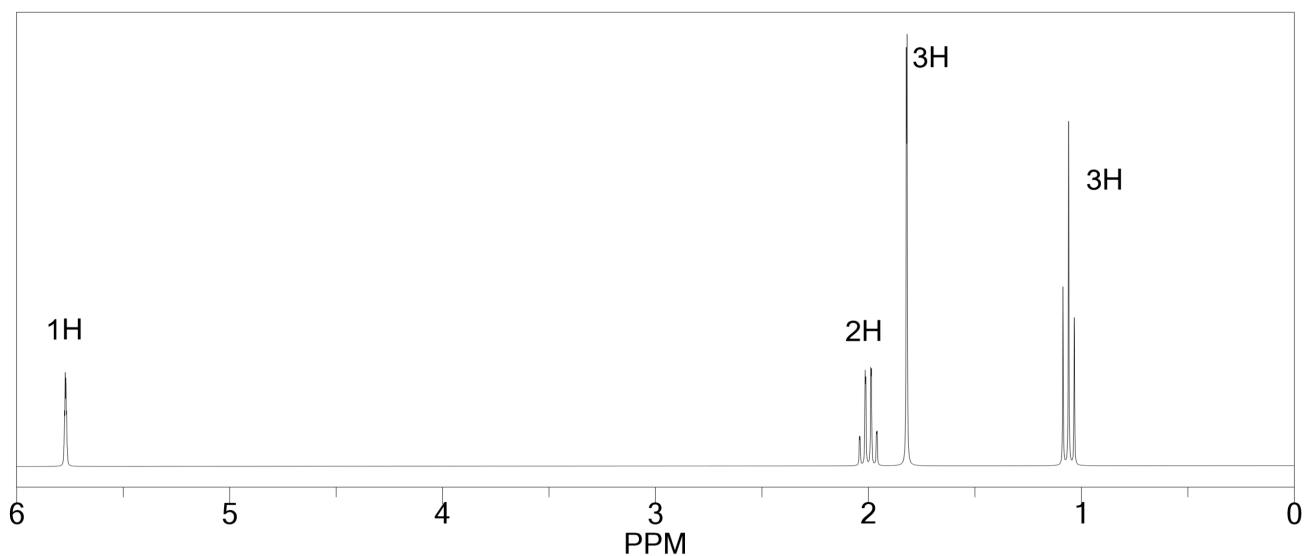
Question Vault

Welcome to orgoreview question vault. We have 5000 more problems for you to solve.

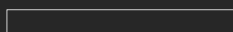
Share



Choose the structure consistent with the following ^1H NMR spectrum.



- (A) CC(Cl)C=C
- (B) CCCC(Cl)=C
- (C) CC(C)C(Cl)=C
- (D) CC(Cl)C=C
- (E) CC(Cl)C=C
- (F) CCCC(Cl)=C



How to Reach Us

Todd's Test Prep
2255 Glades Road
Suite 324A
Boca Raton, Florida 33431
E-mail: help@orgoreview.com

Links

[Contact](#)
[Terms](#)
[Privacy Policy](#)

follow us

