



ORGOREVIEW

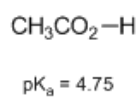
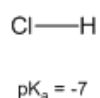
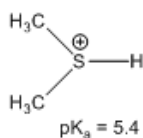
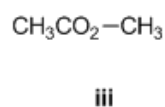
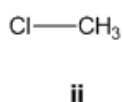
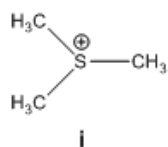
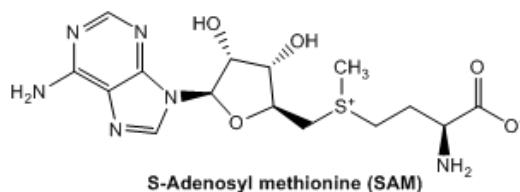
Question Vault

Welcome to orgoreview question vault. We have 5000 more problems for you to solve.

Share

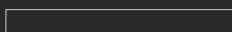
Choose the order that has the following methylating agents correctly arranged with respect to increasing reactivity in the following reaction.

(note: The sulfonium methylating agent is a model for S-Adenosyl methionine (SAM) which is used to methylate substrates in biology, e.g. epigenetics).



○ (A)	○ (B)	○ (C)	○ (D)	○ (E)	○ (F)
i ii iii	i iii ii	ii i iii	ii iii i	iii ii i	iii i ii
increasing → reactivity	increasing → reactivity	increasing → reactivity	increasing → reactivity	increasing → reactivity	increasing → reactivity

VIDEO SOLUTION



How to Reach Us

Todd's Test Prep
2255 Glades Road
Suite 324A
Boca Raton, Florida 33431
E-mail: help@orgoreview.com

Links

[Contact](#)
[Terms](#)
[Privacy Policy](#)

follow us

